

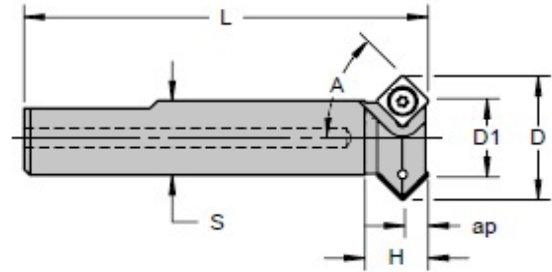


# FRONT & BACK CHAMFER

## ANG Series



- For back chamfering, chamfering, v-grooving, and deburring
- Positive rake
- Four cutting edges
- Coolant through
- Cutter bodies made in the USA



Angle A	Part Number	Dimensions (inches)						No. of Inserts	Insert	Standard Components
		D	D1	S	L	H	ap			Screw
45°	<b>ANG-010</b>	0.625	0.297	0.50	2.50	0.47	0.159	1	SDEB-21.51	3-48 X 3/16
45°	<b>ANG-020</b>	1.000	0.521	0.75	3.00	0.66	0.239	1	SPEH-322	4-40 X 3/8
45°	<b>ANG-030</b>	1.250	0.771	0.75	4.00	0.63	0.239	2		
45°	<b>ANG-040</b>	1.500	1.021	0.75	4.00	0.75	0.239	3		
45°	<b>ANG-050</b>	2.000	1.345	1.00	4.00	0.94	0.328	3	SPEH-432	6-32 X 3/8
15°	<b>ANG-080</b>	1.125	0.949	0.75	3.00	1.00	0.329	2	SPEH-322	4-40 X 1/4
30°	<b>ANG-090</b>	1.125	0.786	0.75	3.00	0.75	0.294	2		

IC	Part Number	Thickness	Clearance Angle	Corner Radius	Coatings				Image
					None	TiCN	TiN	TiAlN	
0.250	SDEB-21.51	0.094	15°	0.015	•	○	•	○	
0.375	SPEH-322	0.125	11°	0.031	•	○	•	○	
0.375	SPEH-322	0.125	11°	0.031	•	○	•	○	
0.500	SPEH-432	0.187	11°	0.031	•	○	•	○	

