

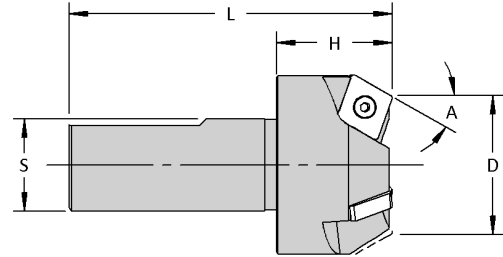


# NEGATIVE RAKE WELD PREP

## ECNM Series Shank Type

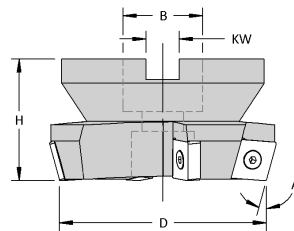
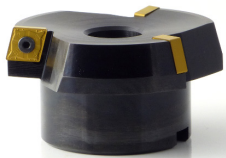


- Recycle your used CNMG inserts by milling with the 100 degree corners
- Excellent for weld prep, facing, and chamfering
- Four indexes per insert
- No clamps to impede chip flow
- Cutter bodies made in the USA



Lead Angle A	Part Number	Dimensions (inches)					Max. DOC ap	No. of Inserts	Insert	Standard Components
		OD	D	S	L	H				Screw
15°	<b>ECNM-410</b>	1.75	1.50	0.75	3.25	1.25	0.45	3	CNMG-432	10H8S48
30°	<b>ECNM-420</b>	1.97	1.50	0.75	3.25	1.25	0.40			
45°	<b>ECNM-430</b>	2.17	1.50	0.75	3.25	1.25	0.32			
15°	<b>ECNM-440</b>	1.75	1.50	1.00	3.50	1.25	0.45			
30°	<b>ECNM-450</b>	1.97	1.50	1.00	3.50	1.25	0.40			
45°	<b>ECNM-460</b>	2.17	1.50	1.00	3.50	1.25	0.32			
15°	<b>ECNM-610</b>	2.87	2.50	1.25	4.00	1.75	0.67	CNMG-643	25H8S56	
30°	<b>ECNM-620</b>	3.21	2.50	1.25	4.00	1.75	0.59			
45°	<b>ECNM-630</b>	3.48	2.50	1.25	4.00	1.75	0.48			

## SCNM Series Shell Mill Type



Lead Angle A	Part Number	Dimensions (inches)					Max. DOC ap	No. of Inserts	Insert	Standard Components
		OD	D	B	H	KW				Screw
15°	<b>SCNM-520</b>	3.24	3.00	1.00	1.75	0.38	0.45	3	CNMG-432	10H8S48
	<b>SCNM-720</b>	4.37	4.00	1.50	2.31	0.63	0.67	4	CNMG-643	25H8S56

IC	Part Number	Thickness	Clearance Angle	Corner Radius	Coatings				Image
					None	TiCN	TiN	TiAlN	
0.500	CNMG-432	0.188	0°	0.031	•	○	•	○	
0.625	CNMG-643	0.250	0°	0.047	•	○	•	○	

ANGLE/CHAMFER MILLS