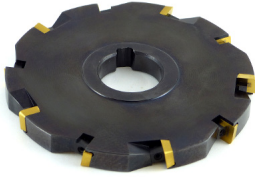
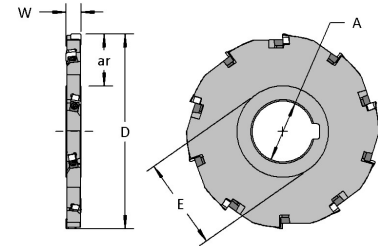


STAGGERED TOOTH

DASC Series Arbor Type



- Disc type cutters for flat bottom slotting, shouldering, and back facing
- Positive geometry and staggered tooth design improves shearing action and decreases vibration
- Wiper flats create fine surface finishes
- Fixed width
- Special sizes can be quoted
- Cutter bodies and inserts made in the USA



| Diameter D | Part Number | Dimensions (inches) | | | | No. of Inserts | | Insert | Standard Components | |
|---------------|-------------|---------------------|------|------|------|----------------|------|--------|---------------------|--------|
| | | W | A | E | ar | Total | Eff. | | Wedge | Screw |
| 3.00 | DASC-010 | 0.250 | 1.00 | 1.50 | 0.72 | 8 | 4 | 1215 | 6W006 | 6DS343 |
| | DASC-020 | 0.250 | 1.25 | 1.88 | 0.53 | 8 | 4 | 1215 | 6W006 | 6DS343 |
| | DASC-030 | 0.313 | 1.00 | 1.50 | 0.72 | 8 | 4 | 1215 | 6W006 | 6DS343 |
| | DASC-040 | 0.313 | 1.25 | 1.88 | 0.53 | 8 | 4 | 1312 | 6W006 | 6DS343 |
| | DASC-050 | 0.375 | 1.00 | 1.50 | 0.72 | 8 | 4 | 1312 | 6W006 | 6DS343 |
| | DASC-060 | 0.375 | 1.25 | 1.88 | 0.53 | 8 | 4 | 1312 | 6W006 | 6DS343 |
| | DASC-070 | 0.500 | 1.00 | 1.50 | 0.72 | 8 | 4 | 1312 | 6W006 | 6DS343 |
| | DASC-080 | 0.500 | 1.25 | 1.88 | 0.53 | 8 | 4 | 1312 | 6W006 | 6DS343 |
| | DASC-090 | 0.750 | 1.00 | 1.50 | 0.72 | 8 | 4 | 1500 | 6W200 | 6DS343 |
| | DASC-100 | 0.750 | 1.25 | 1.88 | 0.53 | 8 | 4 | 1500 | 6W200 | 6DS343 |
| 4.00 | DASC-110 | 0.250 | 1.00 | 1.50 | 1.22 | 10 | 5 | 1215 | 6W006 | 6DS343 |
| | DASC-120 | 0.250 | 1.25 | 1.88 | 1.03 | 10 | 5 | 1215 | 6W006 | 6DS343 |
| | DASC-130 | 0.313 | 1.00 | 1.50 | 1.22 | 10 | 5 | 1215 | 6W006 | 6DS343 |
| | DASC-140 | 0.313 | 1.25 | 1.88 | 1.03 | 10 | 5 | 1215 | 6W006 | 6DS343 |
| | DASC-150 | 0.375 | 1.00 | 1.50 | 1.22 | 10 | 5 | 1312 | 6W006 | 6DS343 |
| | DASC-160 | 0.375 | 1.25 | 1.88 | 1.03 | 10 | 5 | 1312 | 6W006 | 6DS343 |
| | DASC-170 | 0.500 | 1.00 | 1.50 | 1.22 | 10 | 5 | 1312 | 6W006 | 6DS343 |
| | DASC-180 | 0.500 | 1.25 | 1.88 | 1.03 | 10 | 5 | 1312 | 6W006 | 6DS343 |
| | DASC-190 | 0.750 | 1.00 | 1.50 | 1.22 | 10 | 5 | 1500 | 6W200 | 6DS343 |
| | DASC-200 | 0.750 | 1.25 | 1.88 | 1.03 | 10 | 5 | 1500 | 6W200 | 6DS343 |
| 6.00 | DASC-210 | 0.250 | 1.25 | 1.88 | 2.03 | 14 | 7 | 1215 | 6W006 | 6DS343 |
| | DASC-220 | 0.313 | 1.25 | 1.88 | 2.03 | 14 | 7 | 1215 | 6W006 | 6DS343 |
| | DASC-230 | 0.375 | 1.25 | 1.88 | 2.03 | 14 | 7 | 1312 | 6W006 | 6DS343 |
| | DASC-240 | 0.500 | 1.25 | 1.88 | 2.03 | 14 | 7 | 1312 | 6W006 | 6DS343 |
| | DASC-250 | 0.750 | 1.25 | 1.88 | 2.03 | 14 | 7 | 1500 | 6W200 | 6DS343 |

SLOTING CUTTERS

| Size | Part Number | | | | | Page |
|------|-------------|----------|----------|----------|----------|------|
| | 0.007R | 0.015R | 0.030R | 0.060R | 0.125R | |
| 1215 | 1215-007 | 1215-015 | 1215-030 | 1215-060 | X | 22 |
| 1312 | X | 1312-015 | 1312-030 | 1312-060 | 1312-125 | |
| 1500 | X | 1500-015 | 1500-030 | 1500-060 | 1500-125 | |